

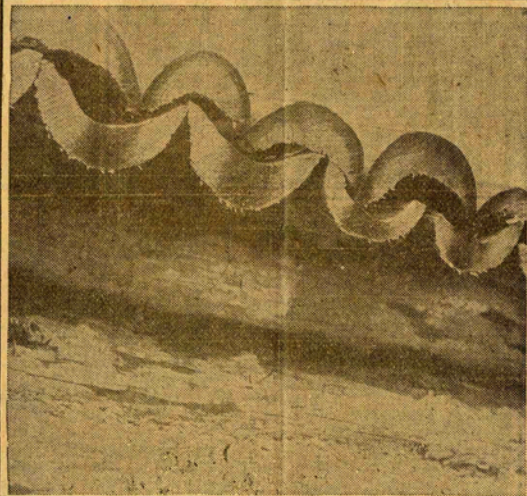
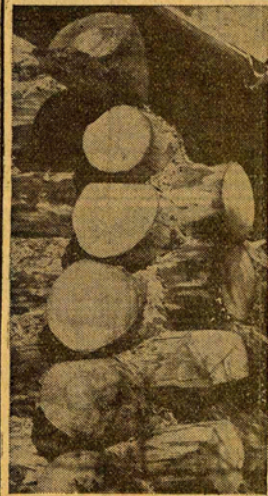
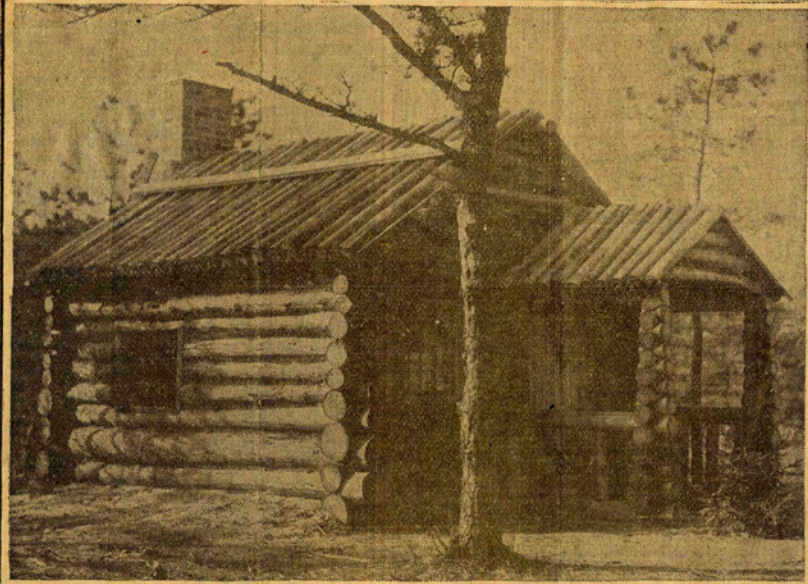


Friends of Myles Standish State  
Forest  
Founded May 2007

Anthony Marcucella Presenting

JAN 25 1934

40



By a Staff Photographer of THE CHRISTIAN SCIENCE MONITOR

Upper—Log Cabin Built in the Myles Standish Forest by a Civilian Conservation Corps Foreman. Lower Left—Logs Placed Criss-Cross and Notched. Lower Right—Section of Channeled Rainproof Roof, Made of Double Layer of Split Cedar Logs, Each Log Scooped Out Like a Water Gutter.

MSSF contains  
the last CCC  
built log  
bathhouse in  
Massachusetts.



Fearing Pond Bathhouse, MSSF

# Recommended Capital Projects (RMP Draft)

## Project Description Estimated Cost & Priority

- Stabilize the CCC Fearing Pond Log Bathhouse  
\$ 75,000 High
- Renovate the CCC Fearing Pond log bathhouse  
and parking area for use as a day use  
swimming area bathhouse  
\$ 650,000 Medium

# **100-Year Anniversary Project**

**\*\*\*Build a Visitors Center!\*\*\***

## **Recommended Capital Projects (RMP Draft)**

- Conduct a building feasibility study for a new or renovated visitors center

\$ 100,000      Low

How can Friends help?

# Do Friends groups have Liability Insurance? Sometimes...

- No insurance required at DCR co-sponsored events — no donations or fees allowed! (How to pay for the event?)
- Liability Insurance required to obtain Special Use Permits for events that involve donations or fees
- Friends groups expect to pay \$700-\$1200/year for Liability Insurance – Directors' Insurance adds another \$700+ per year!

**HELP!**

# Park Watch is on the DCR website but not at MSSF!

## BUREAU OF RANGER SERVICES

### Massachusetts Park Watch



Develop partnerships between various agencies to provide a crime-free environment within parks for all visitors to enjoy.

- Arrange a statewide network of local and state law enforcement officials to support community policing within parks.
- Educate park staff on crime prevention strategies and tips.
- Support community policing endeavors by enlisting the participation of park users and neighboring residents to create a natural civilian surveillance system.
- Display park watch signs to publicize park staff and park visitor participation.
- Emphasize park crime prevention messages by displaying signs and distributing educational brochures to park users.

#### What is Park Watch

Park Watch is a cooperative effort to encourage crime prevention practices by park staff, law enforcement, and park visitors to ensure a safe and crime-free park environment.

#### Why is there a need for Park Watch

An incident involving theft or vandalism within a historical, scenic, or recreational park, directly affects a person's level of enjoyment. By implementing this innovative program, crime will decrease.

The following are some of the most common crime issues involving state parks across the commonwealth:

- Illegal Dumping**
- Theft**
- Alcohol and Drug Use**
- Vandalism**
- Domestic Violence**

# Park Watch Program



- Developed by DCR Rangers based on the Neighborhood Watch Program
- One number to report problems statewide 24/7
- **Joined the Friends Network Campaign for Park Watch** in all parklands across the Commonwealth!